

**Deliver
Exceptional
Vision in Every
Moment**

Capture the details at
high sensitivity even in darkness



LND5110 / LND5110R / LNV5110R

Smart IR (LND5110R / LNV5110R)

Smart IR function enhances the camera IR performance for better image quality



Conventional

LG

Defog

Defog function supports the clear image in any weather condition such as fog, rain and smog



Conventional

LG

HD 60FPS

HD 60FPS stream allows vivid streaming to users

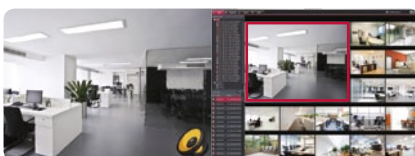


30FPS

60FPS

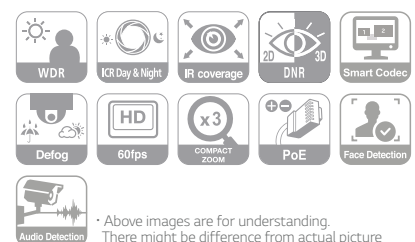
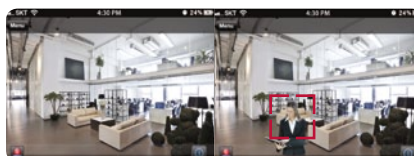
Audio Detection

User can detect abnormal sound like baby cries or a loud noise



Face Detection

By face detection, it is possible to detect people in prohibited areas



· Above images are for understanding.
There might be difference from actual picture

LND5110 / LND5110R / LNV5110R

1.3 Megapixel HD Network (Vandal) Dome Camera

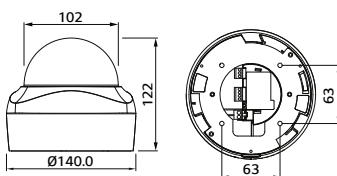


SPECIFICATIONS

Features	LND5110	LND5110R	LNV5110R	
Image Sensor	6.28 mm (1/3 Type) CMOS			
Lens Type	3-9 mm F1.2 (x3 Zoom)			
Max. Resolution	1280 x 1024			
Min. Illumination	Color : 0.03 lux @ F1.2 (1/30 sec, 50 IRE) B/W : 0.002 lux @ F1.2 (1/30 sec, 50 IRE)	Color : 0.03 lux @ F1.2 (1/30 sec, 50 IRE) B/W : 0 lux @ IR LED on	Color : 0.03 lux @ F1.2 (1/30 sec, 50 IRE) B/W : 0 lux @ IR LED on	
Day / Night	ICR (Auto / Day / Night / External / Schedule)			
WDR	Max. 130 dB			
Camera	IR LEDs	16	16	
	IR Distance	30 m	30 m	
	Focus	Auto		
Image Enhancement	Backlight compensation / 2D+3D DNR / Defog / Exposure control / AGC / White balance / Privacy masking / Sharpness / EIS / Pivot / Smart IR (LND5110R, LNV5110R)			
Video Analytics	Motion detection, Tampering alarm, Face detection, Intrusion, Crossing line, Object counting, Object removal, Object desertion			
Video/Audio	Video Compression	H.264 (High profile supported) / MJPEG		
	Max. Frame Rate	60 fps @ 1280 x 1024		
	Multi-Streaming	Yes (Up to 4)		
	ROI (Region of Interest)	Smart Codec (Up to 2 per each stream)		
	Streaming on Motion	Yes		
	Text Overlay	Yes		
	Audio Compression	G.711, G.726		
	Two-way Audio	Yes		
	Audio Detection	Yes		
	Event Trigger	Video analytics, Audio detection, Alarm input		
Event	Event Notification	Relay Out, Email, FTP		
	Pre/Post Event Buffering	5 / 5 seconds		
	Video In / Out	1 BNC Out		
Interface	Audio In / Out	1 In / 1 Out		
	Alarm In / Out	1 In / 1 Out		
	RS-485	-		
	SD Slot	Micro SD (Up to 32 GB)		
	Ethernet	RJ-45 10/100BASE-T		
Network	Security	Password protection, HTTPS (SSL, TLS), IP filtering, IEEE 802.1X		
	Open Protocol	ONVIF 2.2 Profile S, PSIA 1.1		
	Protocol	IPv4/6 - TCP, UDP, HTTP, HTTPS, RTP, RTSP, DHCP, ICMP, QoS IPv4 - FTP, SMTP, NTP, ARP, SNMPv1/v2c/v3, DDNS(LG)		
	Web Viewer	Microsoft Internet Explorer 7.0 ~ 9.0 (32bit)		
	Video Management Software	LG Ipsolute VMS Suite, Mobile App (iPhone, iPad, Android)		
	Connections	Up to 20		
	Power Source	PoE / DC12V		
General	Max. Power Consumption	5.9 W	10.4 W	
	Operating Temperature / Humidity	-10°C ~ 55°C / 0% ~ 80%RH		
	Standard Approvals	UL, FCC, CE, KC, Police (China)		
	Color / Material	White / Plastic	White / Plastic	White / Aluminum
	Ingress Protection	-	-	IK10, IP66
	3-Axis	Manual		
	Dimension	Ø140 x 122 mm		
	Weight	530 g	612 g	980 g

* Exact products and specifications shown may vary by geographic region and are subject to change without notice. Actual products may differ from the images appearing in the catalog.

DIMENSION (Unit : mm)



[LND5110 / LND5110R / LNV5110R]



Home Entertainment Company
Security Overseas Marketing Team
LG Twin Towers, 20 Yeouido-dong, Yeongdeungpo-gu, Seoul 150-721, Korea
Phone : +82-2-3777-5184

The eco-friendly label is attached to those products which have passed LG Electronics' rigorous environmental criteria that evaluate 6 hazardous materials (lead, mercury, cadmium, etc.)



<http://www.lgecommercial.com/security-en>